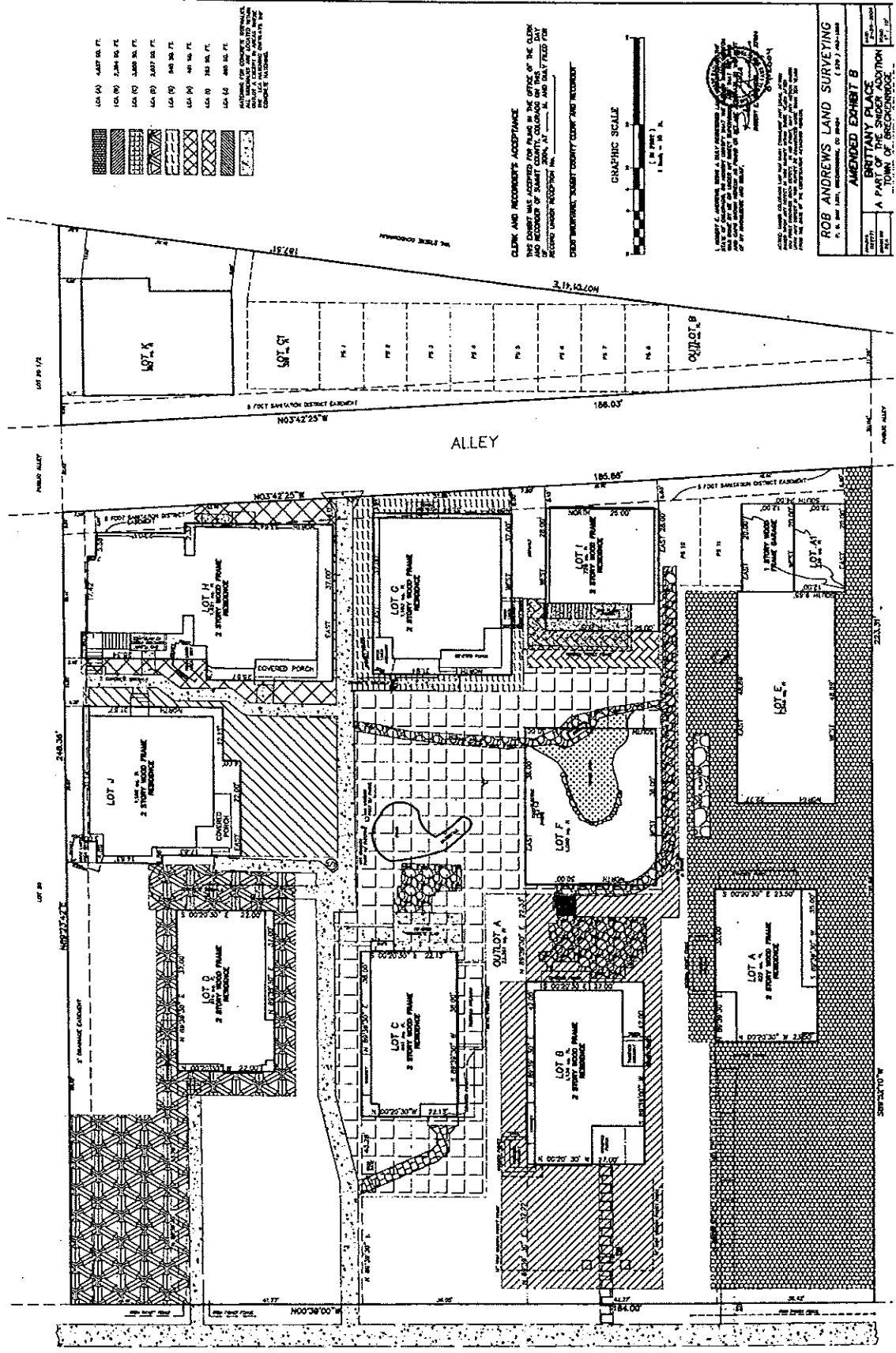


AMENDED EXHIBIT B TO SECOND AMENDMENT TO DECLARATION OF PROTECTIVE COVENANTS FOR BRITANNY PLACE TOWNHOMES AS RECORDED IN SUMMIT COUNTY, COLORADO, OCTOBER 5, 2000 AT RECEPTION NUMBER 634541.

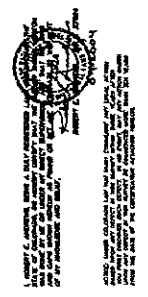
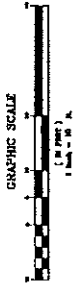
Chert Brunvand-Summit County Recorder 8/17/2004 16:17 DF: 758188



[Symbol]	150' (A) 1487' 00" FT.
[Symbol]	150' (B) 1388' 00" FT.
[Symbol]	150' (C) 1388' 00" FT.
[Symbol]	150' (D) 1388' 00" FT.
[Symbol]	150' (E) 1388' 00" FT.
[Symbol]	150' (F) 1388' 00" FT.
[Symbol]	150' (G) 1388' 00" FT.
[Symbol]	150' (H) 1388' 00" FT.
[Symbol]	150' (I) 1388' 00" FT.
[Symbol]	150' (J) 1388' 00" FT.

1. ALL INFORMATION FOR CONCRETE STRUCTURES SHALL BE PROVIDED TO THE ARCHITECT AND ENGINEER BY THE OWNER. THE ARCHITECT AND ENGINEER SHALL BE RESPONSIBLE FOR THE DESIGN OF ALL STRUCTURES.

CLERK AND RECEIVER'S ACCEPTANCE
 THIS DOCUMENT HAS BEEN FILED IN THE OFFICE OF THE CLERK AND RECEIVER OF SUMMIT COUNTY, COLORADO ON THIS 17TH DAY OF OCTOBER 2004 AT 10:17 AM.



ROB ANDREWS LAND SURVEYING	
P.L.L.C.	
AMENDED EXHIBIT B	
BRITANNY PLACE	
A PART OF THE SMOGHER ADDITION	
TOWN OF GREENWOOD	